

TRANSFERMATE FOR PAYROLL

Fast and accurate global payroll
technology



FAST AND ACCURATE GLOBAL PAYROLL PAYMENTS



WHAT WE DO

TransferMate automates payroll payments across the world and territories, enabling you to process global payroll accurately and on time, all while reducing manual administration and costs.

WHY IT WORKS

We've built a global payments network that covers 140+ currencies. As a result, payments move faster, more transparently, and at a lower cost.



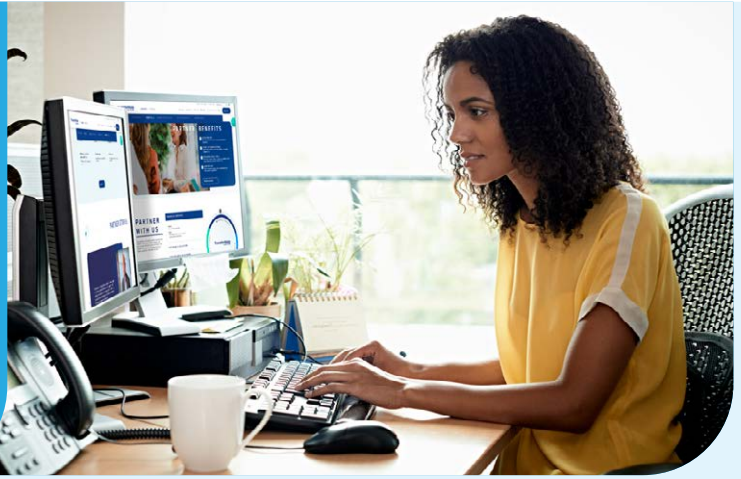
The ability to automate payment seamlessly to over 200 locations quickly, accurately, and compliantly has been a critical enabler in delivering an end-to-end payroll solution to the likes of Uber, Adobe, Wayfair, and Columbia University for their global workforce.

Immedis



PARTNERSHIP BENEFITS

How using TransferMate to process your global payroll will benefit your business.



EXPANDED GLOBAL PAYMENT REACH

Instantly expand your global payroll payments reach to 200+ countries and territories in 140+ currencies, including extensive coverage of major, minor, and exotic currencies.



COST-EFFECTIVE PAYROLL

Because we execute international payments more cost-effectively than do traditional banks, you benefit from those savings.



LOCAL BANK ACCOUNTS

Our network of local bank accounts allows you to meet local compliance rules, easily segregate funds, and provide smart bank statements for reporting.



FASTER PAYROLL PROCESS

Our proprietary global payments network, multiple funding options, and technology mean faster processing time for your payroll team.



FULL VISIBILITY AND SAFETY OF FUNDS

You'll always know where your funds are throughout the payroll cycle, with all funds safeguarded and protected.



AUTOMATED PAYMENTS

Our automated platform means less administration time and room for human error, with pre-funding options reducing payroll processing time by 2-3 days each month.



EASIER RECONCILIATION

Our complete end-to-end solution means your finance and payroll teams don't need to move data between systems, making it easier to track and reconcile payments and extract real-time data.

Please note: We make payments in all of these countries where it is regulatorily allowed by a third-party provider.

FLEXIBLE SETTLEMENT OPTIONS

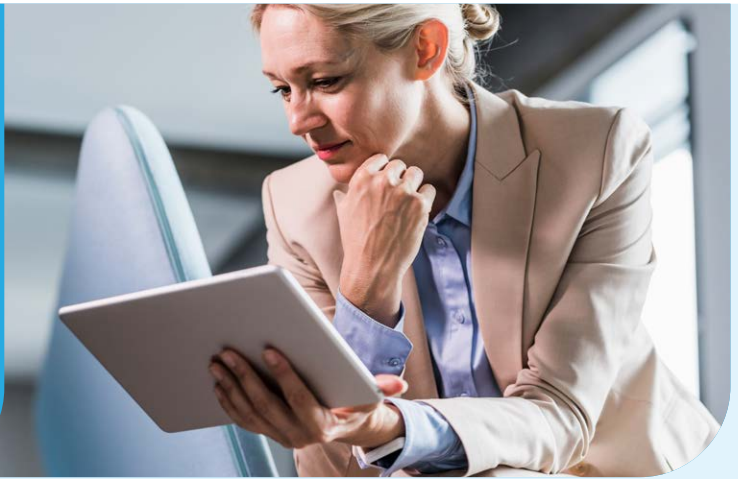
We offer multiple payroll funding options, and all can be used in conjunction with each other to suit your needs.



	GLOBAL REVERSE WIRE	PUSH FUNDS	DIRECT DEBIT	GLOBAL ACCOUNTS	BACS BUREAU
✓ FUNDING OPTIONS	Authorize TransferMate to withdraw payroll liability funds from your account via a wire transfer.	Push funds to TransferMate via any preferred method once a funding request is approved.	Authorize TransferMate to withdraw payroll liability funds via direct debit, and we will directly transfer the money into your employees' bank accounts.	Pre-fund and store value in your Global Accounts, and TransferMate will directly transfer the money into your employees' bank accounts on payday.	Clients authorize TransferMate to withdraw payroll liability funds via direct debit, and we will directly transfer the money into their employees' UK bank accounts.
✓ WHAT IT MEANS	Automated and quick, minimizes the payroll calendar.	A traditional method, not automated.	A traditional method that is automated but takes 3 days to process.	Pre-funding saves time, minimizes the payroll calendar, and revolutionizes how you pay payroll.	Guarantee domestic payroll delivery times in the UK with our accredited Bacs Bureau payment rail.

COMPLIANCE SUPPORT

Leverage TransferMate's infrastructure to meet local compliance rules.



CHALLENGE

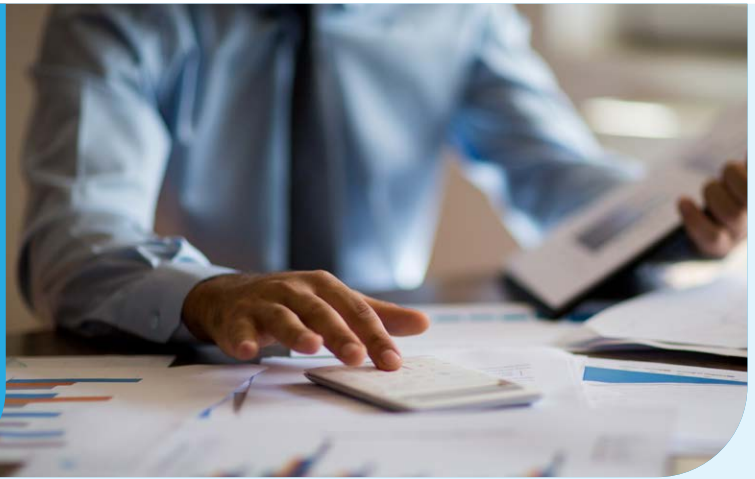
- ✓ Local account requirements
- ✓ Building a compliant banking network
- ✓ Reconciliation and reporting challenges
- ✓ Regulations requiring accurate global payroll payments
- ✓ Expanding your compliance footprint

HOW WE HELP

- ✓ Our global network of bank accounts allows you to pay locally from bank accounts based in that jurisdiction – all from a single, integrated platform.
- ✓ If your business wishes to expand to new territories, it can take weeks (or months) to set up a local banking presence so that you're compliant with local laws. With TransferMate, you'll have a global reach of 200+ countries and territories, instantly.
- ✓ You will have a clear view of all funds during the payroll cycle and smart bank statements for reconciliation and compliance purposes.
- ✓ With our live FX rates, automated processes, and lack of third parties handling funds, you'll know that the payroll processed will be the amount received by the employee.
- ✓ We can introduce you to our network of partners for a holistic approach to payroll compliance.

FUNDS VISIBILITY AND REPORTING

With TransferMate as a single source of truth, you have complete visibility over important information.



REVENUE SAVINGS

Our payments network allows you to avoid costly bank transaction fees and FX markups.



REDUCED ADMINISTRATION TIME

Our integrated systems allow for less manual work and easier reconciliation at the end of the payment process.



SAME-DAY OR NEXT-DAY TRANSFERS

Because payments move through a single network, funds arrive faster than with traditional methods, resulting in same-day/next-day payments.



AMOUNT BILLED = AMOUNT RECEIVED

Our easy invoicing solution, with live FX rates at the time of payment, means the amount billed will always be the amount received.



TRANSPARENT TRACKING

Both payer and payee can track the payment as it travels internationally, just like a package being delivered to your door.



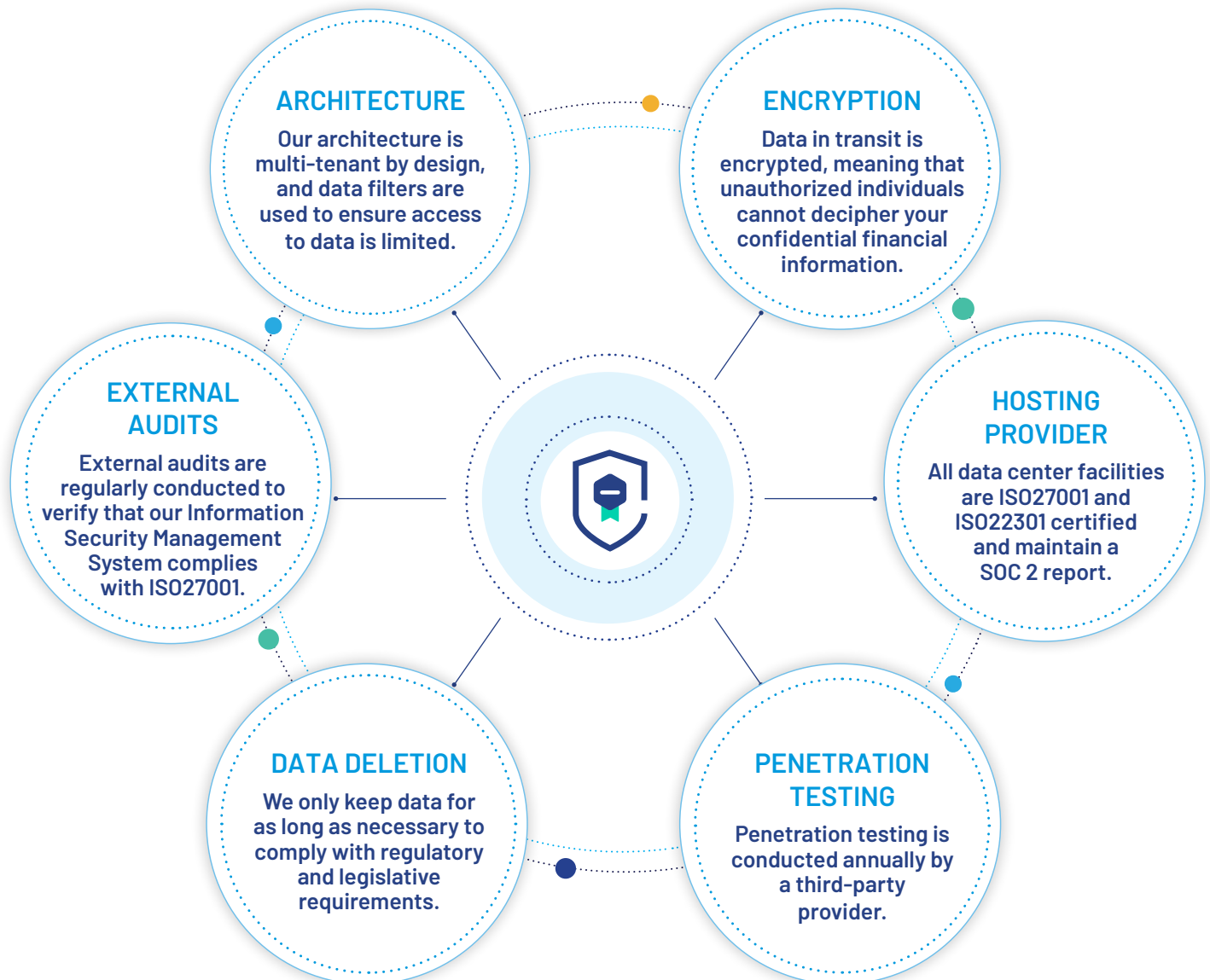
The service is perfect for international transfers. The portal is friendly, employees receive their funds quicker, and we have more control over the whole process.

Rhurpumpen



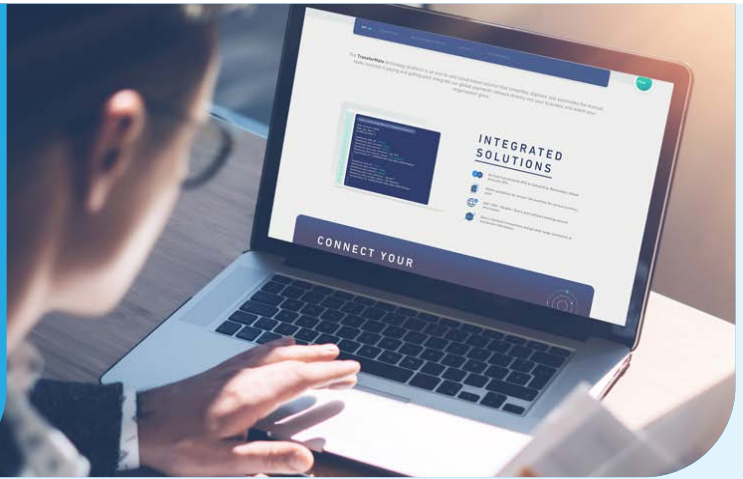
SECURITY AND DATA PROTECTION

As a fully regulated money service business (MSB), we keep your money and data safe.



INTEGRATION OPTIONS

How to integrate with TransferMate and process your global payroll.



TRANSFERMATE WEB PORTAL

Use TransferMate's Web Portal to process transactions directly on our platform.

SECURE FILE PROCESS

Pass secure encrypted files to TransferMate's system to process payments through our network.

WHITE-LABELLED SOLUTION

We can build a white-label version of the TransferMate Platform.

FULL API INTEGRATION

With full API integrations, we can create a seamless and automated payment process for your platform.

CONTACT US

Get in touch with the payroll team, and we'll outline how TransferMate can benefit you and your clients.

E: PayrollSales@TransferMate.com

W: www.transfermate.com/partners/global-payroll

BOOK A CALL